

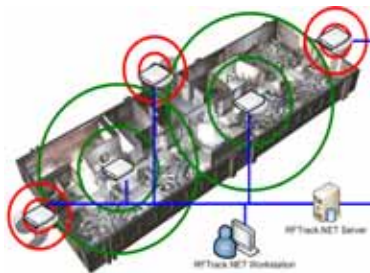


Monitoring Module v4.0

The RFTrack.NET Monitoring Module enables organizations to automate the process of tracking asset and/or personnel movements in real-time using fixed RFID readers. It provides visibility of asset/personnel locations and maintains a historical record of asset/personnel movements.

The platform supports both passive and active RFID readers, allowing it to meet a variety of different needs and requirements. Alarm events can be configured to provide real-time notification of assets and/or personnel in unauthorized locations. It can also be implemented in conjunction with inLogic's Inventory Module, to automate the process of physically inventorying assets using handheld RFID readers.

How it works



Active or Passive RFID readers are installed at strategic read points throughout a building, such as rooms, hallways, stairwells, and doorways to create zones. RFID tags associated with assets and/or personnel are tracked as they move through the zones to provide visibility of the

current time and location. Historical tracking information is generated over time allowing users to go back and trace the movement of assets. Alarm rules can also be defined to trigger real-time events when assets or personnel are not in their assigned zones, or are detected in unauthorized zones. For example, an alarm rule can be enabled for a laptop that sends an email if it leaves the building. When active RFID tags are implemented, tamper, movement, temperature and other sensors on the tags can also be monitored by RFTrack.NET re to trigger alarm events.

RFID asset tracking benefits

- ☐ Lower costs by reducing labor and administration
- ☐ Protect assets with automated monitoring
- ☐ Improve accuracy by eliminating reliance on manual input
- ☐ Streamline operations by enabling process improvements
- ☐ Improved efficiency leads to short-term ROI
- ☐ Improve asset utilization and visibility
- ☐ Locate misplaced or lost assets
- ☐ Improve accountability for SOX & GASB 34

RFID Advantages

- ☐ Long read ranges (up to hundreds of feet)
- ☐ Reads multiple tags simultaneously
- ☐ Doesn't require a line-of-sight to read tags
- ☐ Automates manual processes

About inLogic

inLogic delivers RFID-enabled asset tracking solutions that save time, reduce operating costs, and improve asset visibility for public and private organizations. Our software platform, RFTrack.NET, automates the physical inventory process to reduce man-power and improve accuracy, and tracks the movement of assets to improve visibility. By implementing RFTrack.NET, customers are able to improve their business operations by having the right assets, in the right place, at the right time.

RFTrack.NET Asset Manager



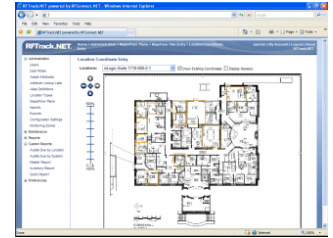
The RFTrack.NET Asset Manager component of the Inventory Module is an intuitive, easy to use browser-based user interface. It is used for

managing asset information, monitoring alarm events, viewing tracking history, and locating assets. The interface is also designed for managing location information, pictures, documents, administering the system, and reporting. Because it is web-based, there is no software to install on each user's workstation. Organizations with multiple locations can easily access a single instance of the software installed at a central location.

The Standard and Enterprise editions of the RFTrack.NET Monitoring Module support importing maps and floor plans that can visually display the physical location of assets and personnel.

Messaging Service

The RFTrack.NET Monitoring Module also includes a Messaging Service that processes tag data coming from the fixed RFID readers, filtering out duplicate tag reads. The service triggers real-time events that can process out-of-the-box alarm rules or customer-definable business rules based on tag reads. A Software Development Kit (SDK) is also available for customers and partners to develop their own Event Process Components.



Monitoring Module Features

- Active and passive RFID
- Real-time asset tracking
- Customizable alarm rule events
- User-definable event processes
- Asset/personnel tracking history
- Choke-point tracking
- Zone monitoring
- Tamper detection (active RFID)
- Motion detection (active RFID)
- Temperature sensor (active RFID)

System Architecture

RFTrack.NET is built on the Microsoft .NET and SQL Server platforms. The Mobile Edition uses a SQL Server Compact Edition database to replicate data with the server. Custom asset fields for storing information specific to your organization's types of assets can be easily added by administrative users. The system easily integrates with Asset Management, Fixed Asset Accounting, and other back-end systems.

Contact Us
inLogic, Inc.

770.427.0102 | www.inlogic.com